

**SPECIFICATION FOR OVERHEAD LINE
POLYMER INSULATORS**

Issue Date:
March 2021

Page: 1 of 30

15-SDMS-02 REV. 02

15-SDMS-02

REV. 02

SPECIFICATION

FOR

OVERHEAD LINE POLYMER INSULATORS

This document contains proprietary information developed by and for exclusive use of Saudi Electricity Company (SEC) Distribution Network. Your acceptance of the document is an acknowledgment that it must be used for the identified purpose/application and during the period indicated. It cannot be used or copied for any other purposes nor released to others without prior written authorization of SEC Distribution Sector. SEC shall assume no responsibility for any type of misuse and/or misapplication, and any harm resulting there from. SEC also reserves the right take any necessary actions to protect its interest against unauthorized use.

**SPECIFICATION FOR OVERHEAD LINE
POLYMER INSULATORS**

Issue Date:
March 2021

Page: 2 of 30

15-SDMS-02 REV. 02

Revision History

#	Date	Revision No.	Major Revision Description
1	March, 2021	2	Specify top fitting for post insulators to be (F-Neck) type in accordance with ANSI/NEMA C29.18.
2	March, 2021	2	Specify dimensions in details for post insulators 13.8 KV and update drawing.
3	March, 2021	2	Specify dimensions in details for post insulators 33 KV and update drawing.
4	March, 2021	2	Specify the international standard for end fittings for suspension/tension insulators to be in accordance with ANSI/NEMA C29.13.
	March, 2021	2	Specify marking requirements in details.
5	March, 2021	2	Guarantee period changed to be according to SEC new rules (5 years from the date of delivery).

**SPECIFICATION FOR OVERHEAD LINE
POLYMER INSULATORS**Issue Date:
March 2021

Page: 3 of 30

15-SDMS-02 REV. 02

Table of Contents

1	SCOPE	4
2	CROSS REFERENCES.....	4
3	APPLICABLE CODES AND STANDARDS	4
4	DESIGN AND CONSTRUCTION REQUIREMENTS	6
5	TESTING AND INSPECTION.....	13
6	PACKING AND SHIPMENT	16
7	GUARANTEE	16
8	SUBMITTALS	16
9	TECHNICAL DATA SCHEDULE.....	18

**SPECIFICATION FOR OVERHEAD LINE
POLYMER INSULATORS**

Issue Date:
March 2021

Page: 4 of 30

15-SDMS-02 REV. 02

1 SCOPE

This SEC distribution material specification (SDMS) describes the minimum technical requirements for design, materials, manufacturing, testing, inspection and performance for the following polymer insulators:

- 1.1 13.8 & 33 KV Line post type insulators.
- 1.2 13.8 & 33 KV Suspension/Tension type insulators.
- 1.3 13.8 & 33 KV Interphase Spacer type insulators.

These insulators are intended to be used in the overhead line distribution system of the Saudi Electricity Company (SEC).

2 CROSS REFERENCES

- 2.1 This SDMS shall always be read in conjunction with SEC General Specification No. 01-SDMS-01 (latest revision) titled General Requirements for all Equipment/Materials, which shall be considered as an integral part of this SDMS.
- 2.2 For service, conditions/system parameters refer to SEC General Specification No. 01-SDMS-01 (latest revision).
- 2.3 This SDMS shall also be read in conjunction with SEC Purchase Order or Contract Schedules and the Scope of Work and Technical Specifications.

3 APPLICABLE CODES AND STANDARDS

- 3.1 The latest revision of the following codes and standards shall be applicable for the equipment/materials covered in this specification. In case of any deviation, the vendor/manufacture may propose equipment/materials conforming to alternate codes or standards. However, the provisions of SEC standards shall supersede the provisions of these alternate standards in case of any difference.

**SPECIFICATION FOR OVERHEAD LINE
POLYMER INSULATORS**

 Issue Date:
March 2021

Page: 5 of 30

15-SDMS-02 REV. 02

STANDARD	TITLE
IEC 60273	Characteristics of Indoor and Outdoor Post Insulators for Systems With Nominal Voltages Greater than 1000V.
IEC 60437	Radio Interference Test on High Voltage Insulators.
IEC 60471	Dimensions of Clevis and Tongue Couplings of String Insulator Units.
IEC 60507	Artificial Pollution Tests on High Voltage Insulators to be used on AC Systems.
IEC 60575	Thermal – Mechanical Performance Test and Mechanical Performance Test on string insulator units
IEC60720	Characteristics of line post insulators.
IEC /TS 60815-1	Selection and dimensioning of high voltage insulators intended for use in polluted conditions – Part 1: Definitions, information and principles.
IEC /TS 60815-3	Selection and dimensioning of high voltage insulators intended for use in polluted conditions – Part 3: Polymer insulators for a. c. systems.
IEC 60587	Electrical insulating materials used under severe ambient conditions – Test methods for evaluating resistance to tracking and erosion.
IEC 61109	Insulators for overhead lines – composite suspension and tension Insulators for AC systems with nominal voltage greater than 1000V – Definitions, test methods and acceptance criteria.
IEC 61466-1	Composite String Insulator Units for Overhead lines with Nominal Voltage Greater Than 1000V – Part 1: Standard Strength Classes and End Fittings.
IEC 61466-2	Composite String Insulator Units for Overhead Lines with Nominal Voltage Greater Than 1000V-Part 2: Dimensional and electrical characteristics.
IEC 61467	Insulators for overhead lines-Insulator strings and sets for lines with nominal voltage greater than 1000V-AC power arc tests.
IEC 61952	Insulators for overhead lines – Composite line post insulators for A. C. systems with a nominal voltage greater than 1000V Definitions, test methods and acceptance criteria.
IEC TS 62073	Guidance on the measurement of wettability of insulator surfaces.
IEC 62217	Polymeric HV insulators for indoor and outdoor use– General definitions, test methods and acceptance criteria.
IEC TR 62039	Selection guide for polymeric materials for outdoor use under HV stress.

Table 1: Applicable Codes and standards (IEC)

STANDARD	TITLE
ANSI/NEMA C29.1	Test methods for electrical power insulators.
ANSI/NEMA C29.13	Insulators Composite – Distribution Dead End Type.
ANSI/NEMA C29.18	Insulators Composite – Distribution Line Post Type.

Table 2: Applicable Codes and standards (ANSI/NEMA)

**SPECIFICATION FOR OVERHEAD LINE
POLYMER INSULATORS**

Issue Date:
March 2021

Page: 6 of 30

15-SDMS-02 REV. 02

STANDARD	TITLE
ASTM A153/A/153M	Standard specification for Zinc coating (Hot Dip) on iron and steel hardware.
ASTM-D2240	Standard Test Method for Rubber Property – Durometer Hardness.

Table 3: Applicable Codes and standards (ASTM)

STANDARD	TITLE
BS 3288	Insulators and Conductor Fittings for Overhead Power Lines (Parts 1 and 2).
BS 729	Specification for Hot dip galvanized coatings on iron and steel articles

Table 4: Applicable Codes and standards (BS)

STANDARD	TITLE
IEEE 957	IEEE Guide for Cleaning Insulators.
IEEE 987	IEEE Guide for Application of Composite Insulators.

Table 5: Applicable Codes and standards (IEEE)

- 3.2 In case of any deviation from the listed standards, it should be indicated in the list of deviations submitted by the supplier.

4 DESIGN AND CONSTRUCTION REQUIREMENTS

4.1 General

- 4.1.1 All types of insulators shall meet or exceed the requirements of this specification in all respects and shall consist of a single piece of silicon rubber together with the core and its metal parts to form a rigid assembly.
- 4.1.2 Manufacturer's drawings, as required in 01-SDMS-01, shall show the outline of the insulators together with all pertinent dimensions. Any variations in these dimensions due to manufacturing tolerances shall be indicated.

**SPECIFICATION FOR OVERHEAD LINE
POLYMER INSULATORS**

Issue Date:
March 2021

Page: 7 of 30

15-SDMS-02 REV. 02

4.2 Design Criteria

- 4.2.1 Unless otherwise specified, the insulators shall be manufactured and tested in accordance with the relevant standards mentioned in Clause No.3.
- 4.2.2 All types of insulators should be designed according to the system parameters and service conditions given in specification 01-SDMS-01 (latest revision).
- 4.2.3 All types of insulators shall have the mechanical, electrical and insulation class ratings as given in the technical data schedules of this SDMS.
- 4.2.4 The design shall be such that stresses due to expansion and contraction in any part of the insulator shall not lead to any deterioration. Precautions shall be taken to avoid any chemical reaction between insulator parts and fitting material.
- 4.2.5 Line post insulators shall be vertical tie top (F-Neck) type in accordance with ANSI/NEMA C29.18.
- 4.2.6 Suspension/tension insulators shall be (Clevis) type in accordance with ANSI/NEMA C29.13.
- 4.2.7 The creepage distance shall be 40 mm/KV for all types of polymeric insulators.
- 4.2.8 The diameter of the polymeric insulator sheds shall not exceed 200 mm.
- 4.2.9 The three types of polymeric insulators (line post insulators, suspension/tension insulators and Interphase Spacer) with creepage distance based on 40 mm/KV shall be as follows:
- With total creepage distance of 552 mm for 13.8 kV.
 - With total creepage distance of 1320 mm for 33kV.

**SPECIFICATION FOR OVERHEAD LINE
POLYMER INSULATORS**Issue Date:
March 2021

Page: 8 of 30

15-SDMS-02 REV. 02

4.3 Materials

- 4.3.1 The complete polymeric insulators shall consist of a Fiberglass Reinforced Plastic (FRP) core having superior electrical and mechanical performance, sheath (housing), sheds and mechanical fittings.
- 4.3.2 To reduce the risk of brittle fracture the FRP core of polymeric insulators shall be electrical corrosion resistant (ECR) glass rod that shall achieve the specified electrical and mechanical characteristics. The FRP core shall be resistant against hydrolysis under service conditions.
- 4.3.3 The polymeric insulators sheath and sheds material shall have a chemical structure of 100 percent silicone rubber before adding fillers. The finished product shall be ultraviolet (UV) radiation exposure resistant. The finished product shall not be affected by atmospheric conditions due to weather, proximity to the coast, fumes, ozone, acids, alkalis, dust or rapid changes in air temperature. There shall be no material degradation such as development of surface cracks and increase in surface hardness, etc.
- 4.3.4 Metal parts shall be made of a good commercial grade of malleable iron, ductile iron or steel, galvanized in accordance with specification 01-SDMS-01 (latest revision).
- 4.3.5 The track resistance of the sheath and shed materials shall meet the requirements of IEC 60587 Method 1 Class 1A4.5 or 1B4.5 or Method 2 Class 2A4.5.
- 4.3.6 The sheath and shed materials of insulators fabricated from high temperature vulcanized silicone rubber shall have a Shore 'A' hardness of not less than 60.

**SPECIFICATION FOR OVERHEAD LINE
POLYMER INSULATORS**Issue Date:
March 2021

Page: 9 of 30

15-SDMS-02 REV. 02

4.4 Construction

- 4.4.1 The polymeric insulator surface shall be shaped and spaced for effective natural cleaning and effective use of creepage distance for coastal and desert conditions.
- 4.4.2 The polymeric insulators shall be of alternating shed design with aerodynamic type profile and without any under-ribs. Sheds shall be at intervals to provide optimum electrical performance and shed design shall provide a protected bottom surface that tends to keep dry in wet conditions.
- 4.4.3 The contours of the metal and polymer parts shall be such as to eliminate areas of high electrical stress concentrations.
- 4.4.4 The polymeric insulator core shall be electrically and mechanically sound, free of cracks and voids, foreign substances and manufacturing flaws. The design shall be such as to ensure that the core is totally encapsulated and fully sealed, from live end to earthed end, by the insulating material to prevent ingress of moisture. If any adhesive substances are used as sealers, they shall not be exposed to environmental conditions.
- 4.4.5 There shall be no holes or splits in the housing at any point along the length of the insulators.
- 4.4.6 The strength of the silicone rubber to FRP core and shed to sheath interface shall be greater than the tearing strength of the silicone rubber.
- 4.4.7 The insulators shall be of sufficient length to provide the required creepage distance and the electrical performance in one single unit. Inline coupling of two or more units shall not be acceptable. No radial joints shall be made along the length of the sheath regardless of the distance between end fittings. The sheath shall be extended inside the end fittings to protect and hermetically seal the fiberglass core from moisture. The interface between the FRP core and end fittings shall be sealed to effectively eliminate the

**SPECIFICATION FOR OVERHEAD LINE
POLYMER INSULATORS**Issue Date:
March 2021

Page: 10 of 30

15-SDMS-02 REV. 02

possibility of moisture ingress for the life of the insulator. A level of redundancy in design shall be demonstrated.

4.4.8 The polymeric insulators thickness of the sheath or shed covering over the core shall be greater than 3.0 mm.

4.4.9 The contours of metal parts of polymeric insulators shall be such as to eliminate areas of high electrical stress concentrations.

4.4.10 The polymeric insulators shall be capable of withstanding high-pressure power washing.

4.4.11 The polymeric suspension/tension/ Interphase Spacer insulator end fittings shall be designed to transmit the mechanical load to FRP core and to develop uniform and consistent mechanical strength of the insulators.

4.4.12 The polymeric insulator end fittings shall be attached to the FRP core through compression crimping process so that the end fittings uniformly transmit the mechanical load to the FRP core. The crimping process shall be controlled by a specific method such as Acoustic Emission Detector to ensure that there is no damage to the core during the compression crimping operation.

4.4.13 The end fittings of the polymeric insulators after complete assembly with the FRP core shall be coaxial with one another.

4.4.14 The insulator shall be radio interference free at operating voltage.

4.4.15 All ferrous components except those made of stainless steel shall be galvanized.

**SPECIFICATION FOR OVERHEAD LINE
POLYMER INSULATORS**

Issue Date:
March 2021

Page: 11 of 30

15-SDMS-02 REV. 02

4.5 Mounting

4.5.1 Line Post Insulator.

- a. Line post insulators shall be vertical tie top (F-Neck) type in accordance with ANSI/NEMA C29.18.
- b. Line post insulator bottom and stud shall be serrated to lock stud against loosening due to line vibration as shown in attached drawings.
- c. The stud for line post insulator shall be hot-dip galvanized in accordance with appropriate industry standard and complete with nuts and washers for steel crossarm mounting. The size and dimensions are given in the attached drawing No. 3.

4.5.2 Suspension/Tension Insulator.

Suspension/tension insulators shall be (Clevis) type in accordance with ANSI/NEMA C29.13 as shown in the attached drawing No. 6.

4.5.3 Interphase Spacer.

- a. Interphase Spacer insulator-insulating rod shall not be twisted even if the unit conductors of a multiple conductor distribution line moves in the opposite phase in the direction of the line.
- b. Interphase Spacer insulator shall have a variety of end fittings options depending on the conductor clamping requirements with or without armor rod as shown in the attached drawing No. 7 and 8.

**SPECIFICATION FOR OVERHEAD LINE
POLYMER INSULATORS**Issue Date:
March 2021

Page: 12 of 30

15-SDMS-02 REV. 02

4.6 Marking

- 4.6.1 Each insulator shall bear a permanent marking in English language in accordance with ANSI or IEC Standard on the end fitting.
- 4.6.2 All the characters shall be legible, durable and permanently marked on one end fitting or on the uppermost shed of the insulator.
- 4.6.3 The use of stickers/labels is not permitted.
- 4.6.4 Each insulator shall bear the following information.
- a. Manufacturer name.
 - b. Rated Voltage.
 - c. Year of manufacturing.
 - d. Designation number.
 - e. Cantilever strength (Combined M&E strength suspension insulator).
 - f. Country of origin.
- 4.6.5 Crate Marking (English and/or Arabic):
- a. Nominal System voltage.
 - b. Type and number of insulators (Suspension and Line post).
 - c. SEC purchase order number / contract number.
 - d. 15-SDMS-02 REV 02.
 - e. SEC Item number.
 - f. Manufacturer's Catalog No.
 - g. Weight, Kg.
 - h. Manufacturer's name / Country of origin.

**SPECIFICATION FOR OVERHEAD LINE
POLYMER INSULATORS**

Issue Date:
March 2021

Page: 13 of 30

15-SDMS-02 REV. 02

5 TESTING AND INSPECTION

All equipment shall be tested for design and type at an SEC approved independent laboratory in accordance with latest standards and as specified herein and test results shall be provided for review and acceptance by SEC. SEC reserve the right to witness any one or all the design / type tests.

5.1 Design Tests

5.1.1 Suspension / Tension/ Interphase Spacer Insulators shall be tested per Clause 10 of IEC 61109.

- a) Tests of interface and connections of end fittings.
- b) Tests on shed and housing material.
- c) Tests on the core material.
- d) Assembled core load-time test.

5.1.2 Post Insulators shall be tested per Clause 10 of IEC 61952.

- a) Tests of interface and connections of end fittings.
- b) Tests on shed and housing material.
- c) Tests on the core material.
- d) Assembled core load-time test.

5.2 Type Tests

5.2.1 Electrical test

5.2.1.1 Suspension/ Tension /Interphase Spacer Insulators shall be tested per Clause 11.1 of IEC 61109.

- a) Dry lightning impulse withstand voltage test.
- b) Wet power-frequency test.

5.2.1.2 Post Insulators shall be tested per Clause 11.1 of IEC 61952.

- a) Dry lightning impulse withstand voltage test.
- b) Wet power-frequency test.

**SPECIFICATION FOR OVERHEAD LINE
POLYMER INSULATORS**

Issue Date:
March 2021

Page: 14 of 30

15-SDMS-02 REV. 02

5.2.2 Mechanical test

5.2.2.1 Suspension/ Tension Insulators/ Interphase Spacer shall be tested per Clause 11.2 of IEC 61109. Damage limit proof test of the tightness of the interface between end fittings and insulator housing.

5.2.2.2 Post Insulators shall be tested per Clause 11.2 of IEC 61952 Cantilever failing load test.

5.3 Sample Tests

These tests are optional and shall be performed if requested by SEC.

5.3.1 Suspension/ Tension Insulators/ Interphase Spacer shall be tested per Clause 12 of IEC 61109.

- a) Verification of dimensions.
- b) Verification of the locking system.
- c) Verification of the tightness of the interface between end fittings and Insulator housing.
- d) Verification of the Specified Mechanical Load (SML).
- e) Galvanizing Test.

5.3.2 Post Insulators shall be tested per Clause 12 of IEC 61952.

- a) Verifications of dimensions.
- b) Galvanizing Test.
- c) Verification of Specified Cantilever Load (SCL).

5.4 Routine Tests

5.4.1 Suspension/ Tension Insulators/ Interphase Spacer tests shall be carried out per Clause 13 of IEC 61109.

- a) Mechanical routine test.
- b) Visual examination.

**SPECIFICATION FOR OVERHEAD LINE
POLYMER INSULATORS****Issue Date:**

March 2021

Page: 15 of 30

15-SDMS-02 REV. 02

5.4.2 Post Insulators shall be tested per Clause 13 of IEC 61952.

- a) Tensile/cantilever load test.
- b) Visual Examination.

5.5 Special Tests

5.5.1 Salt Fog Test per Clause 7 of IEC 60507 with salt concentration of 224 Kg/m³ at 20° C.

5.5.2 Torsional Load Test per Clause 7.8 of ANSI C29.13.

5.5.3 Power Arc Test per Clause 7.5 of ANSI C29.13 for suspension/tension insulators or ANSI C29.18 for post insulators.

5.5.4 The resistance of FRP core against brittle fracture shall be proved by a test against stress corrosion. The test shall be similar to mechanical load time test per Clause 10.4.2.2 of IEC 61109 but with simultaneous application of 1mol/l nitric acid HNO₃ directly in contact with the FRP core with a length of not less than 40 mm.

5.6 Inspection

SEC may wish to witness tests or visit the factory during manufacture of any or all Items covered by this specification. Accordingly the supplier shall give the purchaser adequate notice of manufacturing program and tests to be witnessed. SEC may require certificates and data from the manufacturer/supplier on all pertinent aspects of the manufacturing process. However, for detailed inspection conditions refer to the latest revision of the SEC general specification No 01-SDMS-01, Clause 6 latest revision.

**SPECIFICATION FOR OVERHEAD LINE
POLYMER INSULATORS**

Issue Date:
March 2021

Page: 16 of 30

15-SDMS-02 REV. 02

6 PACKING AND SHIPMENT

In addition to the applicable items per 01-SDMS-01 (latest revision), packing and shipping of the insulators shall conform to the following:

- 6.1 All parts shall be carefully packed for transport in such a manner that they are protected against mechanical damage and climatic conditions during transportation or storage.
- 6.2 Suppliers shall contact Materials Supply Department for additional packing, handling and shipment instructions, as applicable.
- 6.3 Packing marking shall be as per Clause 4.6.5 of this specification.

7 GUARANTEE

- 7.1 Supplier shall guarantee the polymeric insulators against all defects arising out of faulty design, workmanship, or defective material for a period of five (5) years from date of delivery.
- 7.2 If no exceptions are taken to this specification and no list of deviation is submitted, it shall be deemed that in every respect the offered insulators conform to this specification. SEC interpretation of this specification shall be accepted.

8 SUBMITTALS

The following submittals shall be provided as hard copies and in electronic formats stored in USB flash Drive. Unless otherwise specified, e-copies of the files should be PDF format.

8.1 Submittals required with tender/inquiry

- 8.1.1 Summary in table form with the following information: list of items offered, manufacturer, origin, catalogue number, and quantity
- 8.1.2 Clause-by-Clause compliance with the latest revision of SEC specification 15-SDMS-02.

**SPECIFICATION FOR OVERHEAD LINE
POLYMER INSULATORS**

Issue Date:
March 2021

Page: 17 of 30

15-SDMS-02 REV. 02

8.1.3 Manufacturer's Catalogue.

8.1.4 Certificate stating that the raw material has been sampled, tested and inspected in accordance with relevant standard specifications.

8.1.5 Product type test reports and certificates carried out from SEC approved laboratories.

8.1.6 Filled-up technical data schedule on each of the items offered, e-copy in Excel (*.xlsx) format.

8.1.7 Manufacturer CAD drawings, e-copy in AutoCAD 2013 (*.dwg) format and PDF format for each of the items offered.

8.1.8 USB Flash Drive containing e-copy of all the documents mentioned above.

8.2 Submittals required following award of contract.

8.2.1 Samples in compliance with Clause 5.3 of this specification

8.2.2 Manufacturing and routine test schedules

8.2.3 Quality assurance tests

8.2.4 Factory test reports

8.2.5 Special tests, if applicable

8.2.6 USB Flash Drive containing e-copies of all the documents mentioned above.

**SPECIFICATION FOR OVERHEAD LINE
POLYMER INSULATORS**

Issue Date:
March 2021

Page: 18 of 30

15-SDMS-02 REV. 02

9 TECHNICAL DATA SCHEDULE

9.1 LINE POST INSULATOR 13.8 kV CREEPAGE DISTANCE 552 mm

SEC Inquiry No. _____ Item No. _____

S.No.	DESCRIPTION	SEC SPECIFIED VALUES	VENDOR PROPOSED VALUES
1	NOMINAL SYSTEM VOLTAGE	13.8 KV	
2	INSULATING MATERIAL	SILICONE RUBBER	
3	COLOUR OF INSULATOR	GRAY	
4	NUMBER OF SHEDS	BY VENDOR	
5	TIE TOP RADIUS SIDE TIE RADIUS NECK DIAMETER	25 mm 25 mm 73 mm	
6	TOTAL LENGTH	305 ±5 mm	
7	SHED DIAMETER	<200 mm	
8	MIN. CREEPAGE /KV	40 mm	
9	TOTAL CREEPAGE DISTANCE	552 mm	
10	DRY ARCING DISTANCE	241 mm	
11	CANTILEVER STRENGTH	12.5 KN	
12	FLASH OVER VOLTAGE POWER FREQUENCY (DRY) POWER FREQUENCY (WET) IMPULSE +VE IMPULSE -VE	110 KV 85 KV 180 KV 205 KV	
13	WITHSTAND VOLTAGE POWER FREQUENCY (DRY) POWER FREQUENCY (WET) IMPULSE +VE IMPULSE -VE	90 KV 65 KV 150 KV 150 KV	
14	MAX. R.I. VALUE AT TEST VOLTAGE OF 22KV	100 μV	
15	STUD SIZE	M20	
16	COMPLETE WITH STUDS	SHORT STUD	
17	WEIGHT OF INSULATOR	BY VENDOR	
18	MARKING	As per clause 4.6	

Table 6: Technical Data Schedule 1.

* To be specified in tender documents.

**SPECIFICATION FOR OVERHEAD LINE
POLYMER INSULATORS**

Issue Date:
March 2021

Page: 19 of 30

15-SDMS-02 REV. 02

TECHNICAL DATA SCHEDULE

9.2 LINE POST INSULATOR 33 kV CREEPAGE DISTANCE 1320 mm

SEC Inquiry No. _____ Item No. _____

S.No.	DESCRIPTION	SEC SPECIFIED VALUES	VENDOR PROPOSED VALUES
1	NOMINAL SYSTEM VOLTAGE	33 KV	
2	INSULATING MATERIAL	SILICONE RUBBER	
3	COLOUR OF INSULATOR	GRAY	
4	NUMBER OF SHEDS	BY VENDOR	
5	TIE TOP RADIUS SIDE TIE RADIUS NECK DIAMETER	25 mm 25 mm 73 mm	
6	TOTAL LENGTH	510 ±5 mm	
7	SHED DIAMETER	<200 mm	
8	MIN. CREEPAGE /KV	40 mm	
9	TOTAL CREEPAGE DISTANCE	1320 mm	
10	DRY ARCING DISTANCE	438 mm	
11	CANTILEVER STRENGTH	12.5 KN	
12	FLASH OVER VOLTAGE POWER FREQUENCY (DRY) POWER FREQUENCY (WET) IMPULSE +VE IMPULSE -VE	175 KV 150 KV 290 KV 380 KV	
13	WITHSTAND VOLTAGE POWER FREQUENCY (DRY) POWER FREQUENCY (WET) IMPULSE +VE IMPULSE -VE	160 KV 135 KV 250 KV 250 KV	
14	MAX. R.I. VALUE AT TEST VOLTAGE OF 22KV	200 µV	
15	STUD SIZE	M20	
16	COMPLETE WITH STUDS	SHORT STUD	
17	WEIGHT OF INSULATOR	BY VENDOR	
18	MARKING	As per clause 4.6	

Table 7: Technical Data Schedule 2.

* To be specified in tender documents.

**SPECIFICATION FOR OVERHEAD LINE
POLYMER INSULATORS**

Issue Date:
March 2021

Page: 20 of 30

15-SDMS-02 REV. 02

TECHNICAL DATA SCHEDULE

**9.3 SUSPENSION/TENSION / INTERPHASE SPACER
INSULATOR 13.8 KV CREEPAGE DISTANCE 552 mm.**

SEC Inquiry No. _____ *Item No.* _____

S.No.	DESCRIPTION	SEC SPECIFIED VALUES	VENDOR PROPOSED VALUES
1	NOMINAL SYSTEM VOLTAGE	13.8 KV	
2	INSULATING MATERIAL	SILICONE RUBBER	
3	COLOUR OF INSULATOR	GRAY	
4	NUMBER OF SHEDS	BY VENDOR	
5	TOTAL LENGTH	BY VENDOR	
6	SHED DIAMETER	<200 mm	
7	MIN. CREEPAGE /KV	40 mm	
8	TOTAL CREEPAGE DISTANCE	552 mm	
9	DRY ARCING DISTANCE	241 mm	
10	TENSION STRENGTH	70 KN	
11	FLASH OVER VOLTAGE POWER FREQUENCY (DRY) POWER FREQUENCY (WET) IMPULSE +VE IMPULSE -VE	110 KV 85 KV 180 KV 205 KV	
12	WITHSTAND VOLTAGE POWER FREQUENCY (DRY) POWER FREQUENCY (WET) IMPULSE +VE IMPULSE -VE	90 KV 65 KV 150 KV 150 KV	
13	MAX. R.I. VALUE AT TEST VOLTAGE OF 22KV	100 μ V	
14	WEIGHT OF INSULATOR	BY VENDOR	
15	MARKING	As per clause 4.6	

Table 8: Technical Data Schedule 3.

* To be specified in tender documents.

**SPECIFICATION FOR OVERHEAD LINE
POLYMER INSULATORS**

Issue Date:
March 2021

Page: 21 of 30

15-SDMS-02 REV. 02

TECHNICAL DATA SCHEDULE

**9.4 SUSPENSION/TENSION / INTERPHASE SPACER
INSULATOR 33 KV CREEPAGE DISTANCE 1320 mm.**

SEC Inquiry No. _____ Item No. _____

S.No.	DESCRIPTION	SEC SPECIFIED VALUES	VENDOR PROPOSED VALUES
1	NOMINAL SYSTEM VOLTAGE	33 KV	
2	INSULATING MATERIAL	SILICONE RUBBER	
3	COLOUR OF INSULATOR	GRAY	
4	NUMBER OF SHEDS	BY VENDOR	
5	TOTAL LENGTH	BY VENDOR	
6	SHED DIAMETER	<200 mm	
7	MIN. CREEPAGE /KV	40 mm	
8	TOTAL CREEPAGE DISTANCE	1320 mm	
9	DRY ARCING DISTANCE	438 mm	
10	TENSION STRENGTH	70 KN	
11	FLASH OVER VOLTAGE POWER FREQUENCY (DRY) POWER FREQUENCY (WET) IMPULSE +VE IMPULSE -VE	175 KV 150 KV 290 KV 380 KV	
12	WITHSTAND VOLTAGE POWER FREQUENCY (DRY) POWER FREQUENCY (WET) IMPULSE +VE IMPULSE -VE	160 KV 135 KV 250 KV 250 KV	
13	MAX. R.I. VALUE AT TEST VOLTAGE OF 22KV	200 μ V	
14	WEIGHT OF INSULATOR	BY VENDOR	
15	MARKING	As per clause 4.6	

Table 9: Technical Data Schedule 4.

* To be specified in tender documents.

**SPECIFICATION FOR OVERHEAD LINE
POLYMER INSULATORS**Issue Date:
March 2021

Page: 22 of 30

15-SDMS-02 REV. 02

TECHNICAL DATA SCHEDULE

SEC Inquiry No. _____

Item No. _____

- Additional Technical Information or Features Specified by SEC
- Additional Supplementary Data or Features Proposed by Bidder/Vendor/Supplier.
- Other Particulars to be filled-up by the Bidder/Vendor/Supplier.
- List of Deviations and Clauses to which exception is taken by the Bidder/Vendor/Supplier. (Use separate sheet, if necessary).

Description	Manufacturer of Material/Equipment	Vendor/Supplier
Name of Company		
Location and Office Address		
Name and Signature of Authorized Representative with Date		
Official Seal / Stamp		

Table 10: Technical Data Schedule 5.

**SPECIFICATION FOR OVERHEAD LINE
POLYMER INSULATORS**

Issue Date:
March 2021

Page: 23 of 30

15-SDMS-02 REV. 02

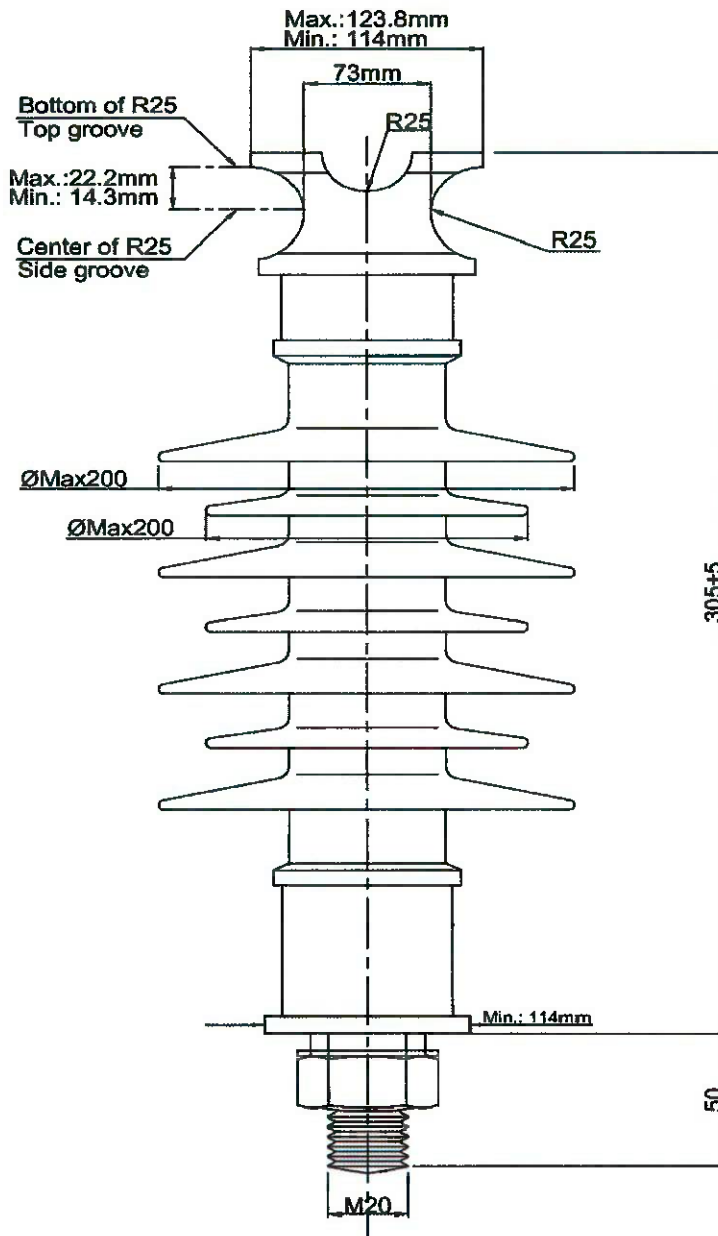


FIG.1-POST INSULATOR 13.8 KV CREEPAGE 552

Note: Number of Sheds May Vary

- All DIMENSIONS ARE IN MILLIMETERS

**SPECIFICATION FOR OVERHEAD LINE
POLYMER INSULATORS**

Issue Date:
March 2021

Page: 24 of 30

15-SDMS-02 REV. 02

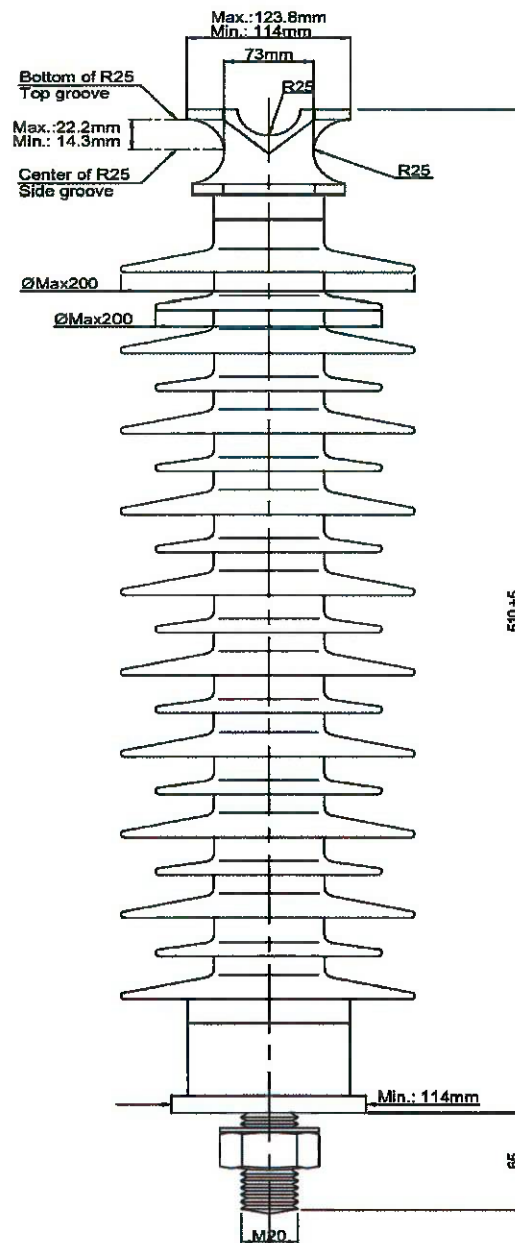


FIG.2-POST INSULATOR 33 KV CREEPAGE 1320

Note: Number of Sheds May Vary

- All DIMENSIONS ARE IN MILLIMETERS

**SPECIFICATION FOR OVERHEAD LINE
POLYMER INSULATORS**

Issue Date:
March 2021

Page: 25 of 30

15-SDMS-02 REV. 02

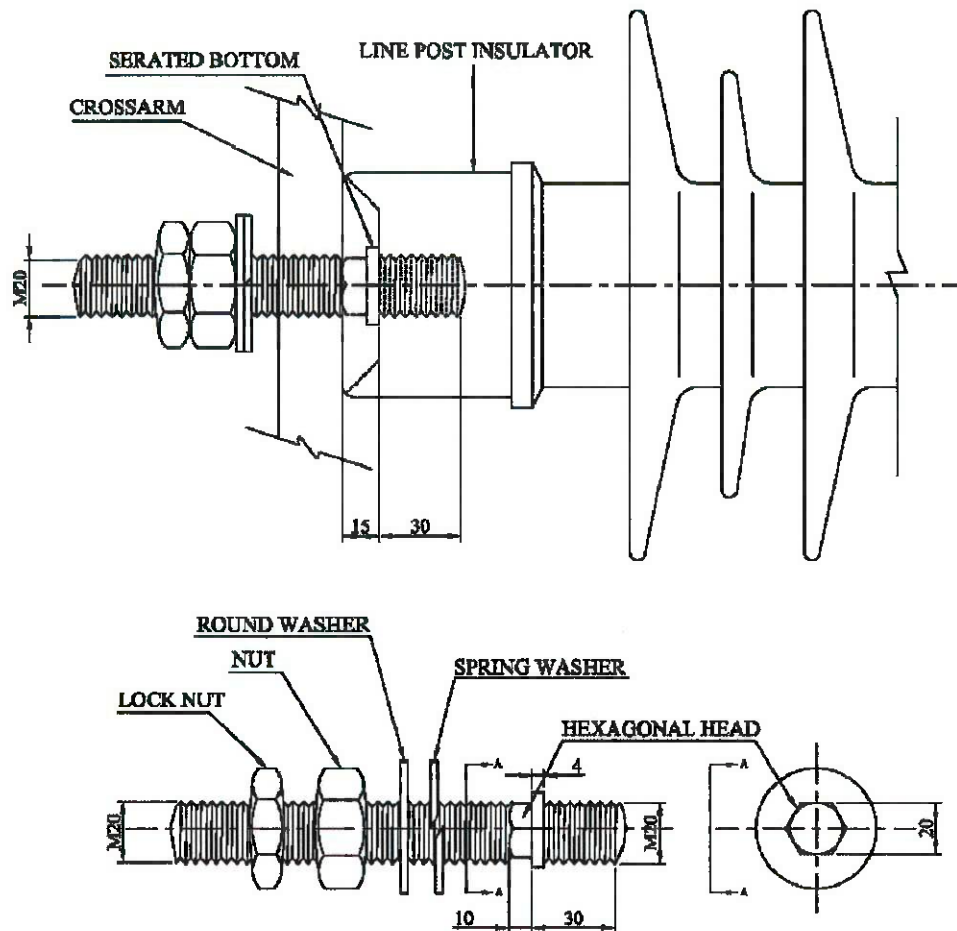


FIG.3-STEEL STUD FOR POST INSULATOR.

- All DIMENSIONS ARE IN MILLIMETERS

**SPECIFICATION FOR OVERHEAD LINE
POLYMER INSULATORS**

Issue Date:
March 2021

Page: 26 of 30

15-SDMS-02 REV. 02

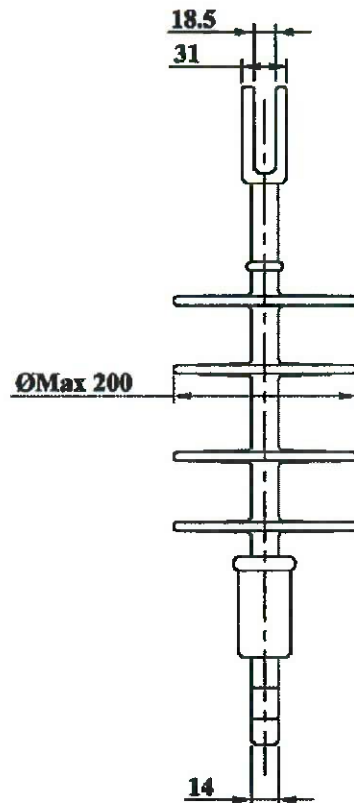


FIG.4-SUSPENSION INSULATOR 13.8 KV CREEPAGE 552

Note: Number of Sheds May Vary

- All DIMENSIONS ARE IN MILLIMETERS

**SPECIFICATION FOR OVERHEAD LINE
POLYMER INSULATORS**

Issue Date:
March 2021

Page: 27 of 30

15-SDMS-02 REV. 02

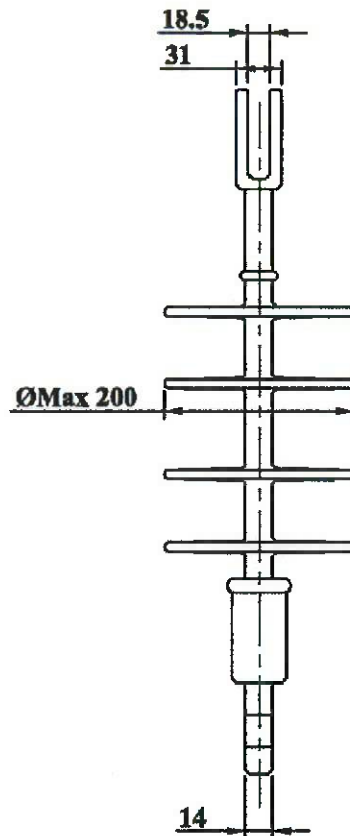


FIG.5-SUSPENSION INSULATOR 33 KVCREEPAGE 1320

Note: Number of Sheds May Vary

- All DIMENSIONS ARE IN MILLIMETERS

**SPECIFICATION FOR OVERHEAD LINE
POLYMER INSULATORS**

Issue Date:
March 2021

Page: 28 of 30

15-SDMS-02 REV. 02

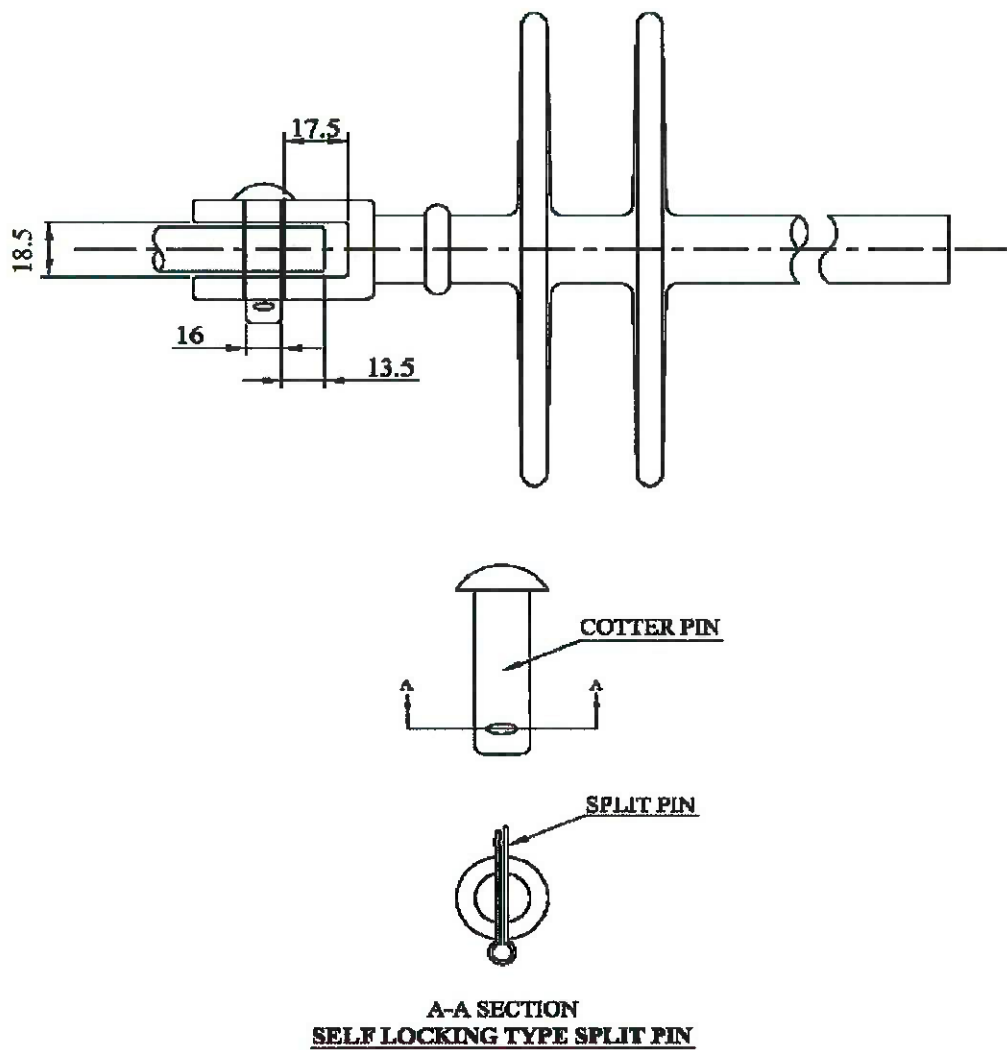


FIG.6-SUSPENSION INSULATOR – CLEVIS TYPE

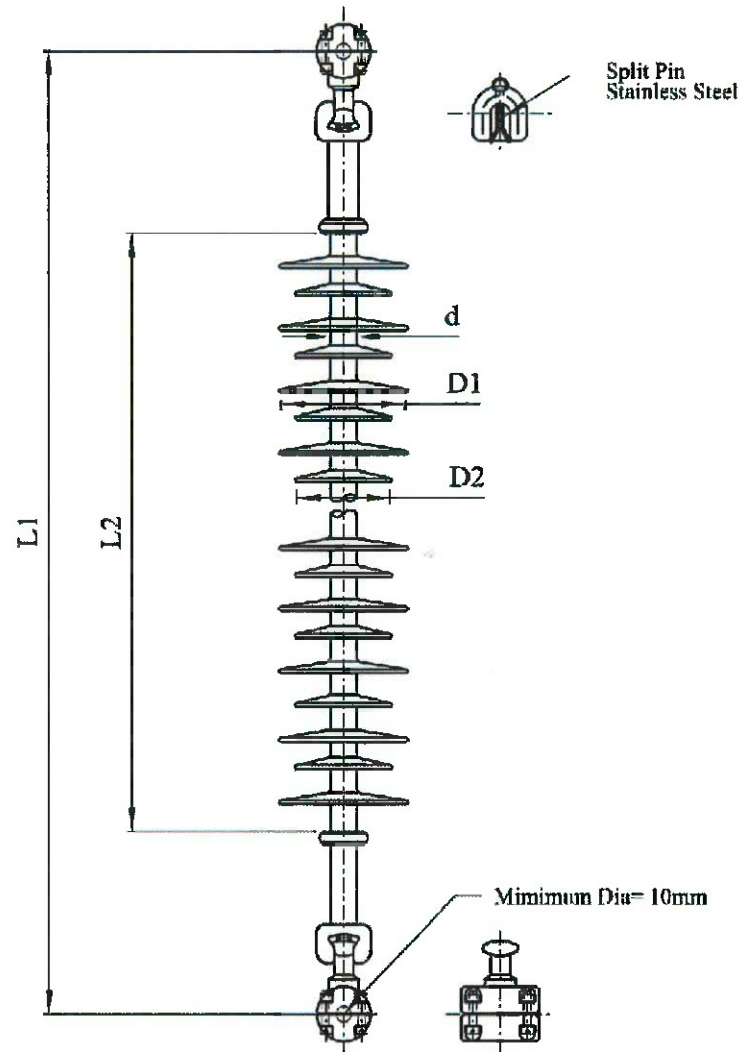
- All DIMENSIONS ARE IN MILLIMETERS

**SPECIFICATION FOR OVERHEAD LINE
POLYMER INSULATORS**

Issue Date:
March 2021

Page: 29 of 30

15-SDMS-02 REV. 02



Dimensions	L1	L2	D1	D2	d
Minimum	1100	630	115	100	24
Maximum	1200	720	130	100	29

FIG.7- INTERPHASE SPACER

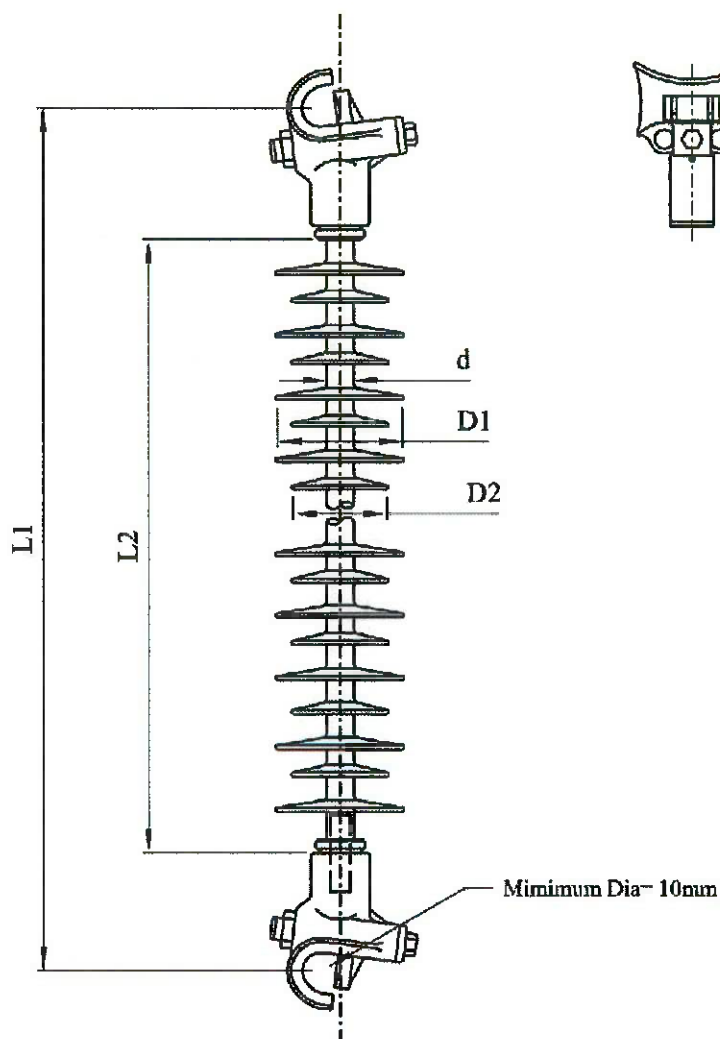
- ALL DIMENSIONS ARE IN MILLIMETERS

**SPECIFICATION FOR OVERHEAD LINE
POLYMER INSULATORS**

Issue Date:
March 2021

Page: 30 of 30

15-SDMS-02 REV. 02



Dimensions	L1	L2	D1	D2	d
Minimum	1100	630	115	100	24
Maximum	1200	720	130	100	29

FIG.8-INTERPHASE SPACER

- All DIMENSIONS ARE IN MILLIMETERS